



Changing Federal Landscape

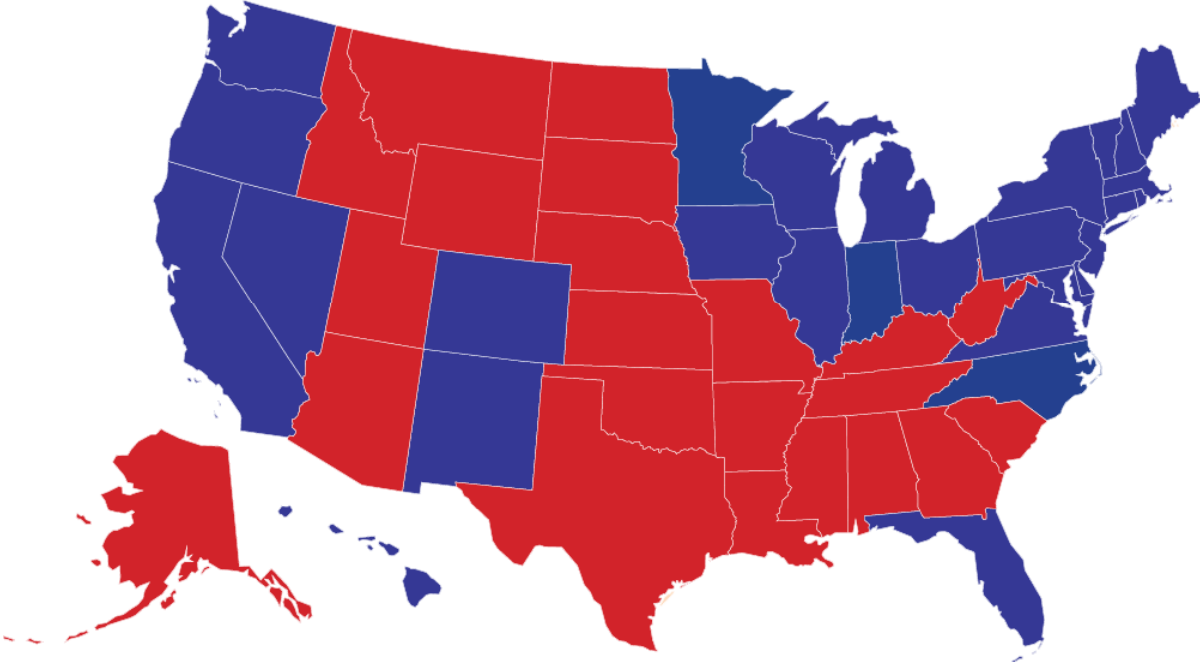


Overview

- Cornerstone Government Affairs
- Quick Review of New Political Landscape
- Farm Bill Review
- Budget Situation



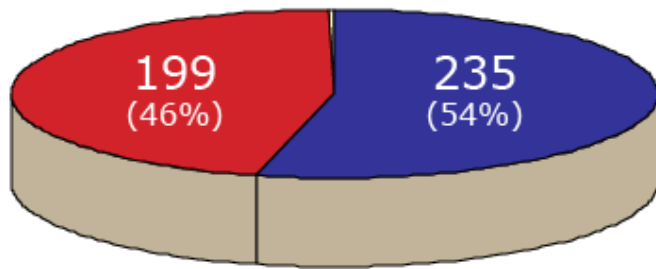
Presidential Election Results



	Popular Vote	Electoral Votes
Obama/Biden	52.8%	365
McCain/Palin	45.9%	173

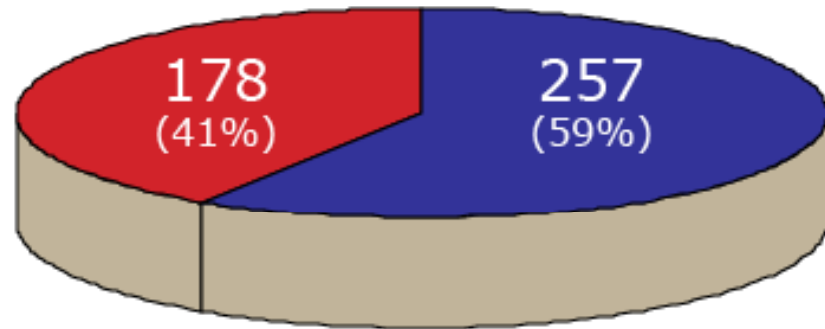
House Election Results

110th Congress



■ Democrats ■ Republicans ■ 1 Vacancy

111th Congress*



■ Democrats ■ Republicans

House Retirements and Defeats*

Appropriations Committee	Agriculture Committee
Virgil Goode, Jr. (VA)*	Chip Pickering (MS)
David Hobson (OH)	Robin Hayes (NC)*
Ray LaHood (IL)	Marilyn Musgrave (CO)*
Joe Knollenberg (MI)*	Randy Kuhl (NY)*
John Peterson (PA)	Tim Walberg (MI)*
Ralph Regula (OH)	Nancy Boyda (KS)*
Jim Walsh (NY)	Nick Lampson (TX)*
Dave Weldon (FL)	Tim Mahoney (FL)*
Bud Cramer (AL)	
Tom Udall (NM)	

How House Changes Affects Ag

- Large Democratic gains mean:
 - Committee and subcommittee ratios change
 - Democrats now have an 80 vote majority
- Republican losses and retirements mean:
 - Many Ranking Member changes on House Authorization & Appropriations subcommittees
- Slight changes to Agriculture Authorization & Appropriations Subcommittee

House Agriculture Appropriations Sub.

Democrats (8)	Republicans (5)
Rosa DeLauro (CT)	Jack Kingston (GA)
Maurice Hinchey (NY)	Tom Latham (IA)
Sam Farr (CA)	Jo Ann Emerson (MO)
Allen Boyd (FL)	Ray LaHood (IL)
Sanford Bishop (GA)	Rodney Alexander (LA)
Marcy Kaptur (OH)	
Jesse Jackson, Jr. (IL)	
Steven Rothman (NJ)	

House Ag Committee Members for the past 3 Farm Bills

Turnover

104th Congress House Ag Committee (1996):50 members

<i>Baesler</i>	<i>Pastor</i>	Calvert	Foley
<i>Baldacci</i>	<i>Peterson (MN)</i>	Canady	Goodlatte
<i>Bishop</i>	<i>Pomeroy</i>	Chambliss	Gunderson
<i>Brown (CA)</i>	<i>Rose</i>	Chenoweth	Hostettler
<i>Clayton</i>	<i>Stenholm</i>	Combest	LaHood
<i>Condit</i>	<i>Thompson</i>	Cooley	Latham
<i>De la Garza</i>	<i>Thurman</i>	Crapo	Lewis (KY)
<i>Dooley</i>	<i>Volkmer</i>	Doolittle	Lucas
<i>Farr</i>	Allard	Emerson	Pombo
<i>Hilliard</i>	Baker (LA)	Everett	Roberts (Chairman)
<i>Holden</i>	Barrett (NE)	Ewing	Smith (MI)
<i>Johnson (SD)</i>	Boehner		
<i>McKinney</i>	Bryant (TN)		
<i>Minge</i>			

107th Congress Retention: 18 of 50

<i>Baesler</i>	<i>Pastor</i>	Calvert	Foley
Baldacci	Peterson (MN)	Canady	Goodlatte
Bishop	<i>Pomeroy</i>	Chambliss	Gunderson
<i>Brown (CA)</i>	<i>Rose</i>	Chenoweth	Hostettler
Clayton	Stenholm	Combest	LaHood
Condit	Thompson	Cooley	Latham
<i>De-la-Garza</i>	<i>Thurman</i>	Crapo	Lewis (KY)
Dooley	<i>Volkmer</i>	Doolittle	Lucas
<i>Farr</i>	Allard	Emerson	Pombo
Hilliard	Baker (LA)	Everett	Roberts (Chairman)
Holden	Barrett (NE)	Ewing	Smith (MI)
<i>Johnson (SD)</i>	Boehner		
<i>McKinney</i>	Bryant (TN)		
<i>Minge</i>			

107th Congress House Ag Committee (2002):

Acevedo-Vilá

Baca

Baldacci

Berry

Bishop

Boswell

Clayton

Condit

Dooley

Etheridge

Hill

Hilliard

Holden

Kind

Larsen

Lucas (KY)

McIntyre

Peterson (MN)

Phelps

Ross

Shows

Stenholm

Thompson (MS)

Thompson (CA)

Boehner

Chambliss

Combest (Chairman)

Cooksey

Everett

Fletcher

Goodlatte

Graves

Gutknecht

Hayes

Jenkins

Johnson (IL)

Kennedy (MN)

Lucas (OK)

Moran (KS)

Osborne

Ose

Pence

Pickering

Pombo

Putnam

Rehberg

Riley

Schaffer

Simpson

Smith (MI)

Thune

110th Congress Retention: 75% turnover

Acevedo-Vilá

Baca

Baldacci

Berry

Bishop

Boswell

Clayton

Condit

Dooley

Etheridge

Hill

Hilliard

Holden

Kind

Larsen

Lucas (KY)

McIntyre

Peterson (MN)

Phelps

Ross

Shoys

Stenholm

Thompson (MS)

Thompson (CA)

Boehner

Chambliss

Combest (Chairman)

Cooksey

Everett

Fletcher

Goodlatte

Graves

Gutknecht

Hayes

Jenkins

Johnson (IL)

Kennedy (MN)

Lucas (OK)

Moran (KS)

Osborne

Ose

Pence

Pickering

Pombo

Putnam

Rehberg

Riley

Schaffer

Simpson

Smith (MI)

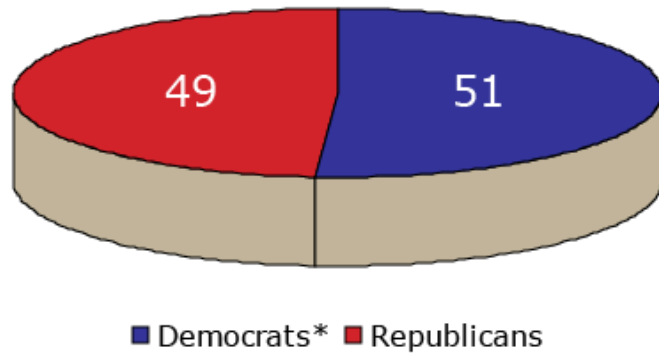
Thune

New House Ag Committee Members

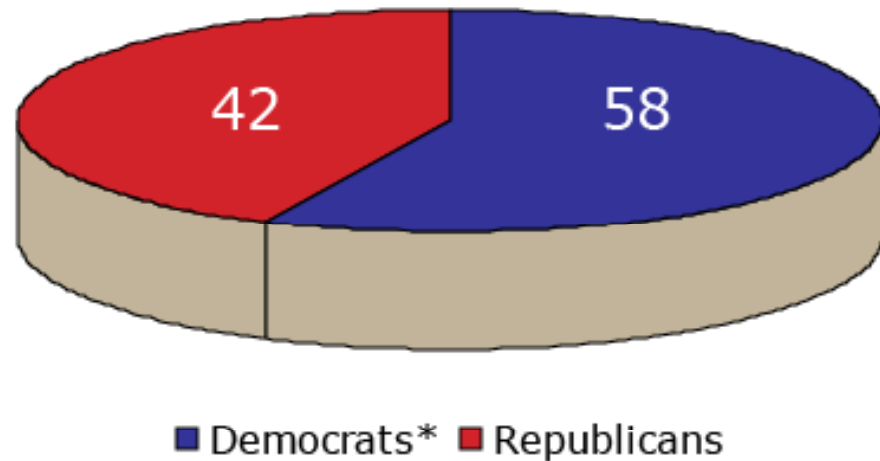
- **Agriculture**
- Congressman Kurt Schrader of Oregon
- Congresswoman Debbie Halvorson of Illinois
- Congresswoman Kathy Dahlkemper of Pennsylvania

Senate Election Results*

110th Congress



111th Congress



*Notes: Democrats includes two independents; results as of 12-03-2008 with the Minnesota race still officially undecided.

How Senate Changes Affect Us

- Committee and subcommittee ratios change
- Democrats just two votes shy of “magic”
60 votes needed to end filibusters
- Moderate Republicans likely to cross aisle to enact major elements of Democratic agenda
- Slight changes to Agriculture Appropriations Subcommittee

Ag Appropriations Subcommittee

Democrats (8)	Republicans (7)
Herb Kohl (WI)	Robert Bennett (UT)
Tom Harkin (IA)	Thad Cochran (MS)
Byron Dorgan (ND)	Arlen Specter (PA)
Dianne Feinstein (CA)	Kit Bond (MO)
Richard Durbin (IL)	Mitch McConnell (KY)
Tim Johnson (SD)	Larry Craig (ID)
Ben Nelson (NE)	Sam Brownback (KS)
Jack Reed (RI)	

A New Democratic President Means...

- **Senate Committee on Agriculture, Nutrition & Forestry**
 - Nomination Hearing- Gov. Thomas J. Vilsack, of Iowa, to be Secretary of Agriculture Wednesday, January 14, 2009, 10:00 a.m.



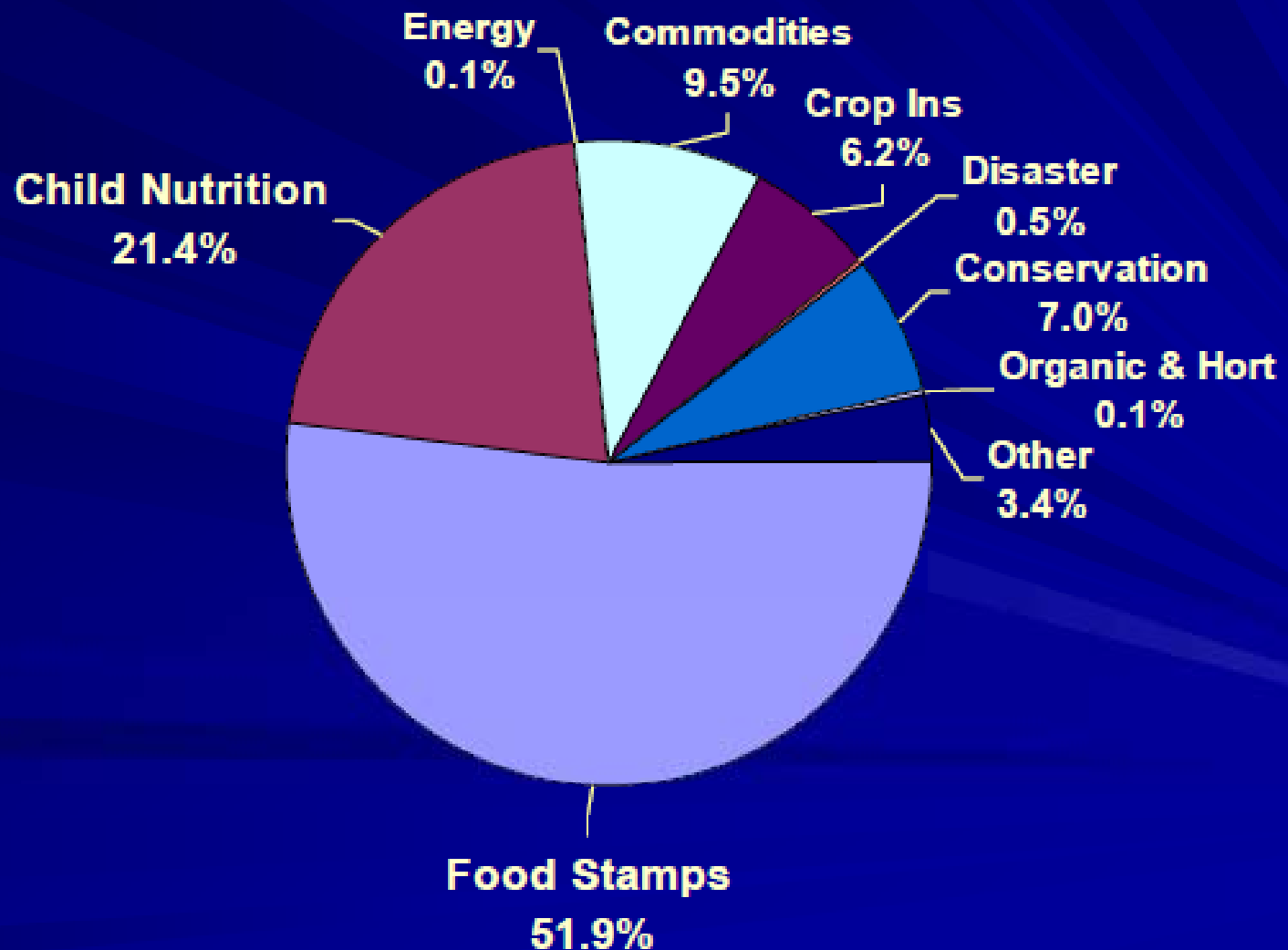
Farm Bill



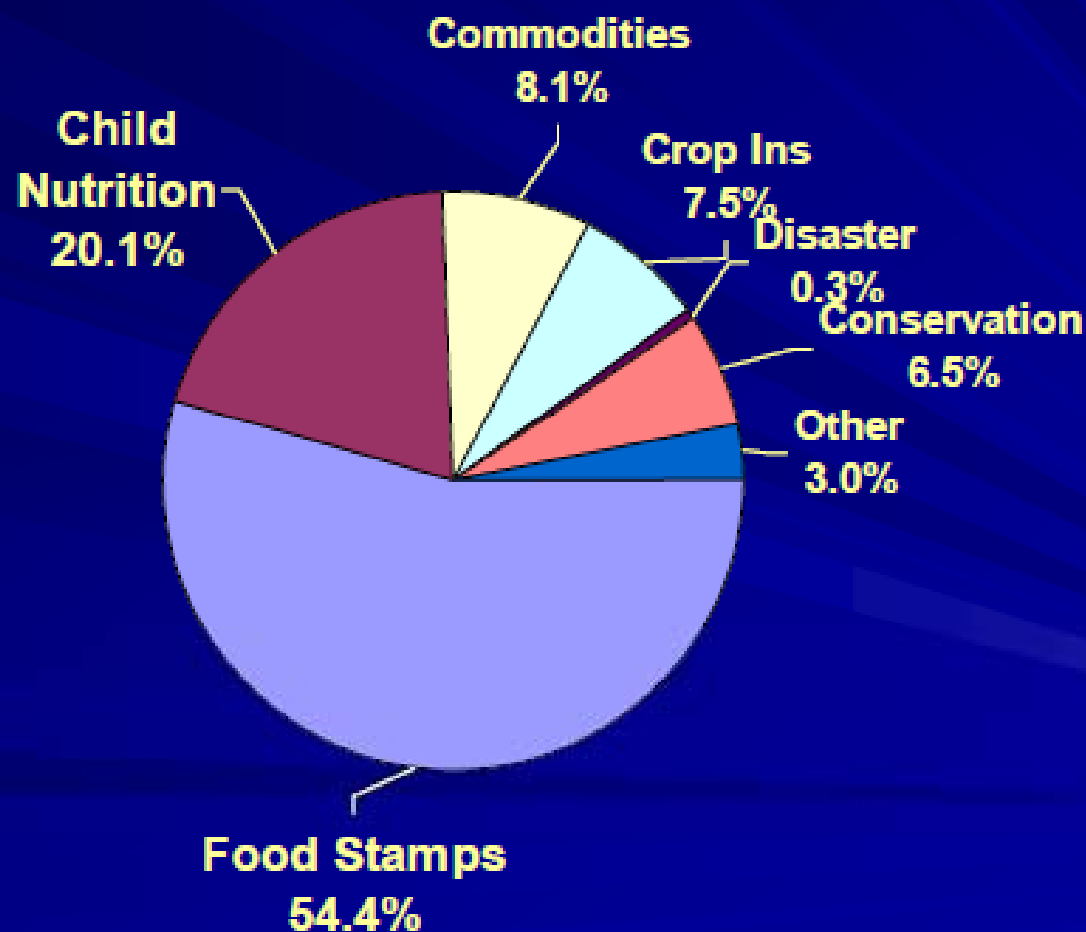
At FB Enactment: The Editorial Page Perspective



At FB Enactment: A More Accurate Perspective:
73.3% of Est. FY 08-17 Outlays of \$782 billion for Ag
Committee Programs Are Nutrition-Related
(HAC Rackup of CBO Estimates by Title. March,2007 Baseline)

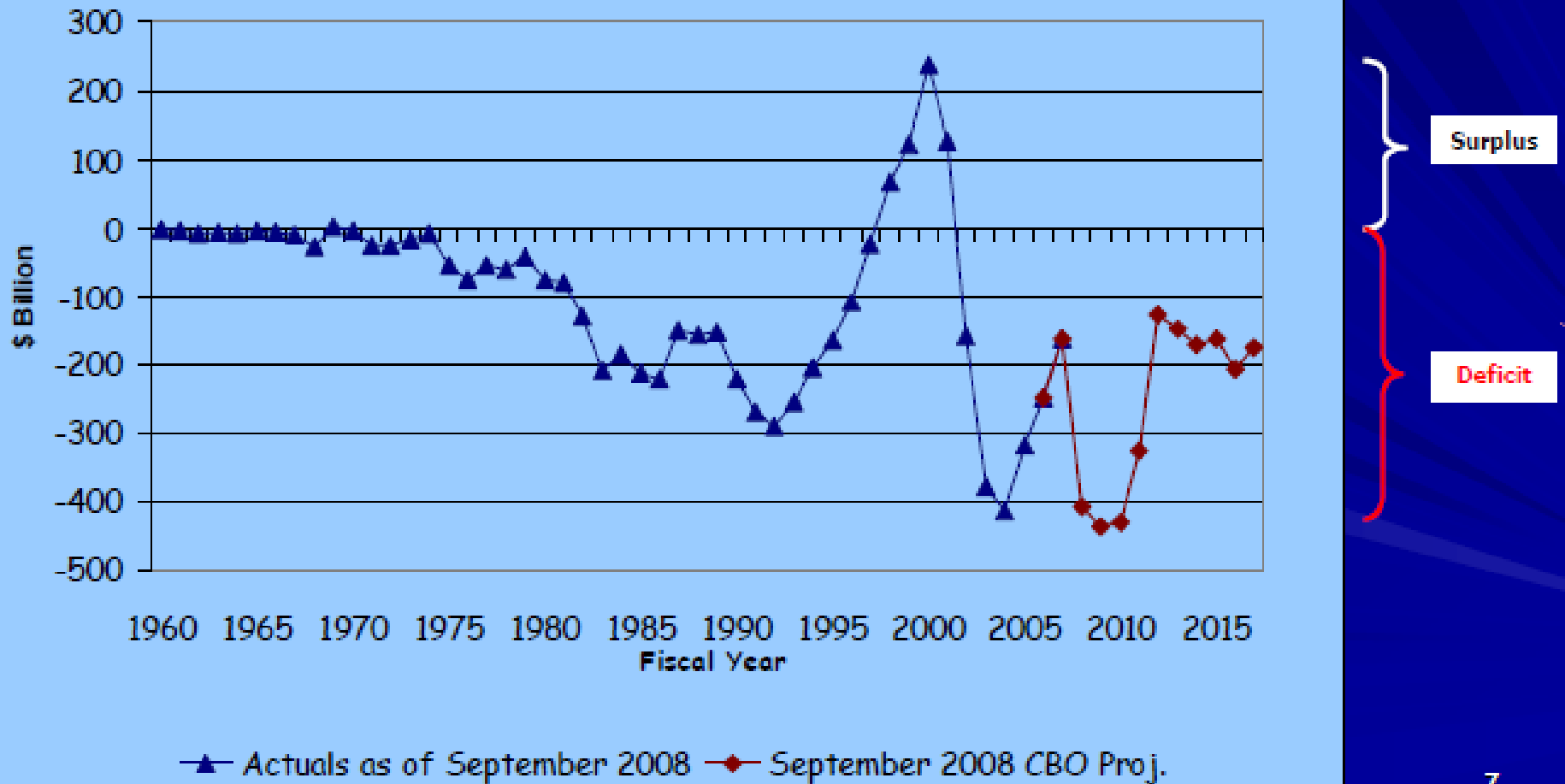


CBO's September 2008 Baseline Shows Estimated FY 09-18 Outlays of \$910 Billion for Programs Under Senate Ag Committee Jurisdiction. 74.5% of Outlays Are Nutrition-Related (HAC Rackup of CBO Estimates)

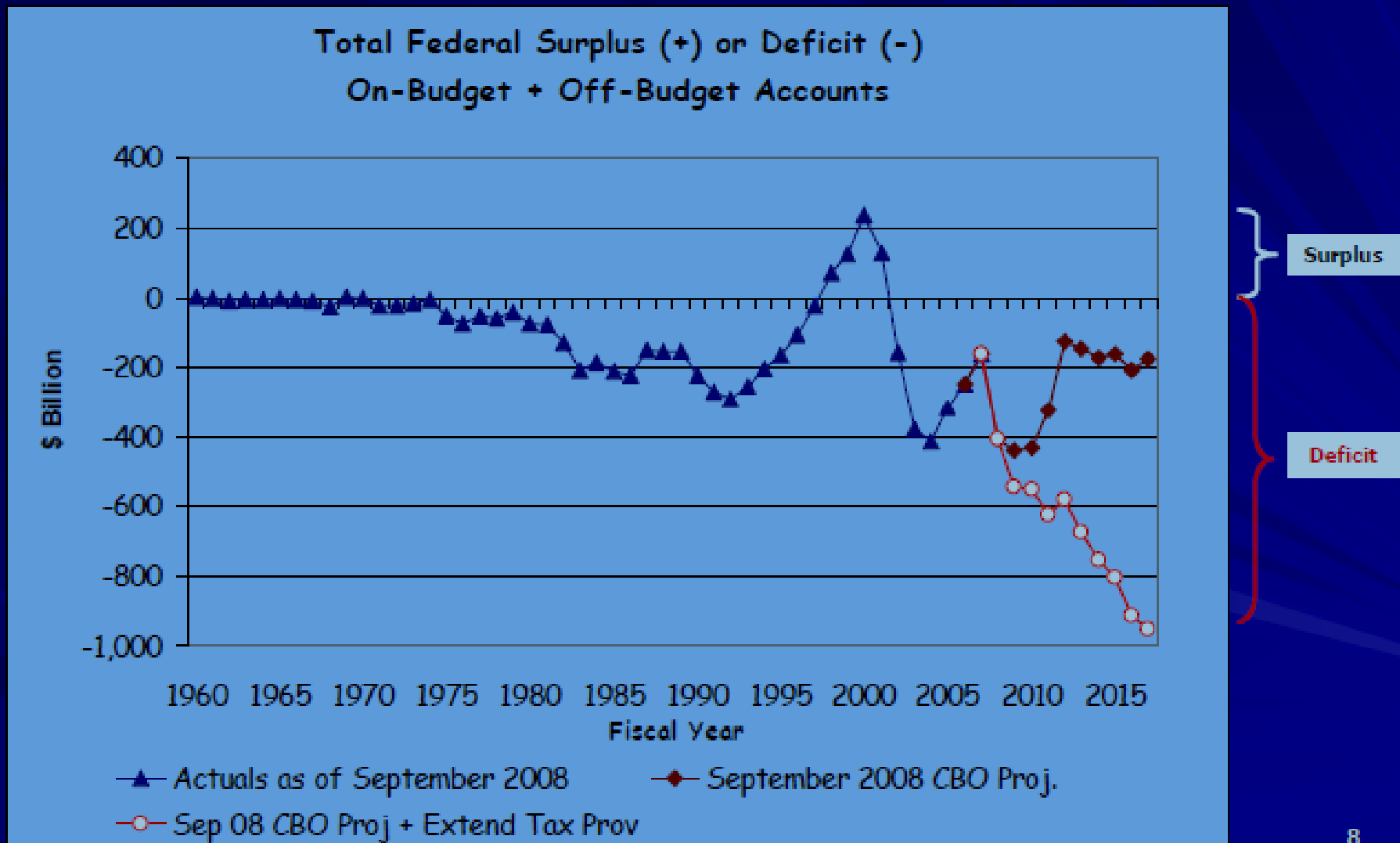


In its September, 2008 Baseline, CBO projects a 10-Year Deficit of \$2.3 Trillion.

Total Federal Surplus (+) or Deficit (-)
On-Budget + Off-Budget Accounts



If we assume that Expiring Tax Cuts are Extended, the 10-Year Deficit in the CBO September, 2008 Baseline Increases to \$7.4 Trillion



Ag Committee Agenda

- House Ag Committee

- CFTC, farm bill, food safety, animal id, and possibly USDA reorg

- Senate Ag Committee

- economic challenge, child nutrition, rural renewable energy, farm bill, global food demand for food, fiber, feed and energy, civil rights, and food safety failures

Old Bulls and New Calves

- America's first African-American president values both experience and diversity
 - Old bulls (Clinton appointees) resurfacing in key positions
 - Hitting the ground running
 - New calves (fresh faces) emerging as well
 - Many women and lots of racial diversity

The 2008 Democratic Surge Means...

- Agenda set by Speaker Pelosi, Senate Leader Reid, and President Obama
- Overwhelming (80 vote) majority in House
- Near filibuster-proof majority in Senate
- Expect quick action on economic stimulus, financial rescue, left-over FY 2009 bills



Questions?

